

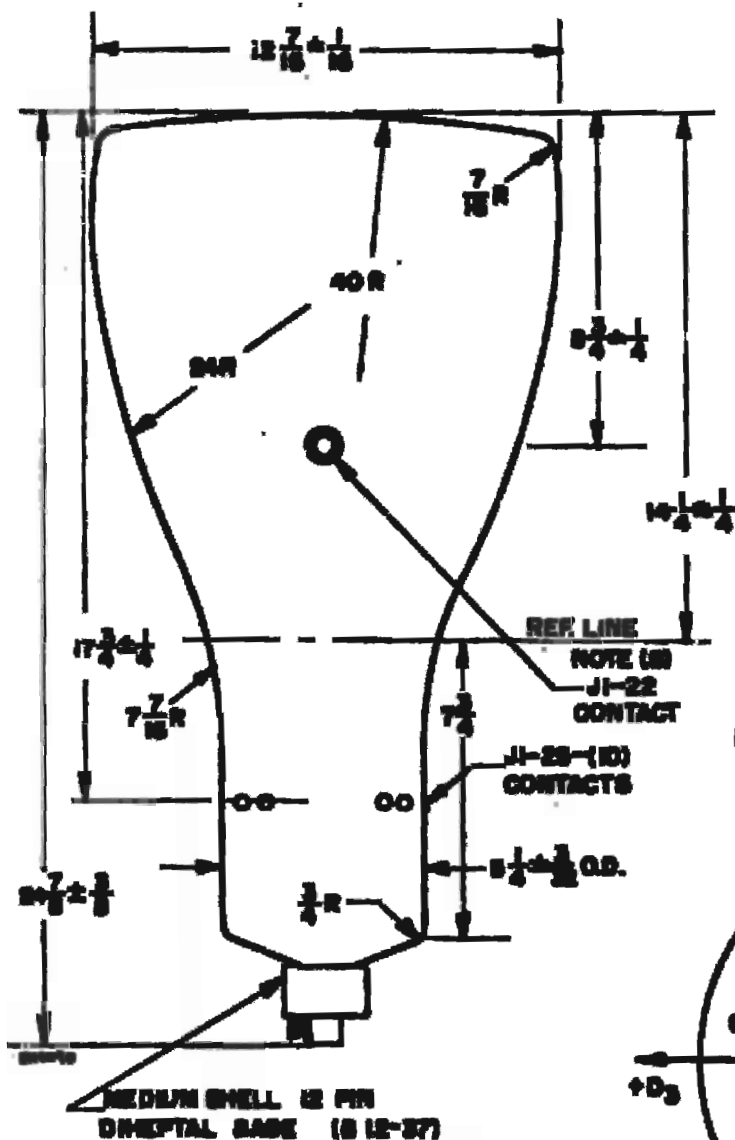
ELECTRON TUBE, CATHODE RAY

TYPE 12ACP19

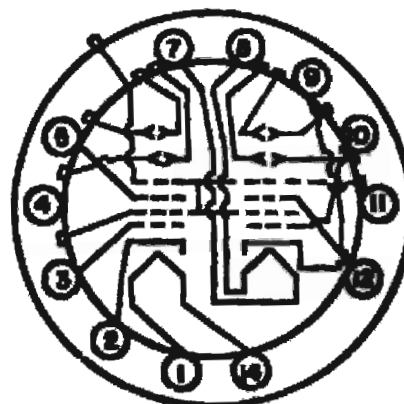
The requirements and tests of the latest issue of Specification MIL-E-1 shall apply, except as otherwise required herein.

Description: A 1 1/2 inch diameter, dual beam, electrostatic focus and deflection cathode ray tube.

Ratings:	E_f V	E_{c1} Vdc	E_{b1} Vdc	E_{b2} Vdc	e_d v	R_g Meg.	Z_d Meg. Note 1	E_{hk} Vdc
Absolute Maximum:	$6.3 \pm 10\%$	0	4,400	11,000	2,500	1.5	5.0	± 180
Minimum:	---	-300	-----	5,000	-----	---	---	-----
Test Cond.:	6.3	Adjust	Focus	7,500	-----	---	---	-----



NOTE: (A) BASE PIN 4 ALIGNED WITH J1-22 CONTACT.
(B) REFERENCE LINE IS THAT POINT WHERE A 0.750±0.005 INCH DIAMETER WIRE GAGE WILL STOP.



BASING DIAGRAM

- | | |
|-----------------------|------------------------|
| GUN A | GUN B |
| 1. HEATER | 7. HEATER |
| 2. CATHODE | 8. HEATER |
| 3. GRID NO. 1 | 9. CATHODE |
| 5. FOCUSING ELECTRODE | 10. GRID NO. 1 |
| 14. HEATER | 12. FOCUSING ELECTRODE |

