

Customer Harris  
 Model # Y-1347  
 Serial # 01379  
 Date 11/17/77

# GREENRAY INDUSTRIES, INC.



840 WEST CHURCH ROAD, MECHANICSBURG, PA. 17055  
 717 766-0223

## FINAL TEST REPORT

Greenray Division

### Test Conditions

External Load 1000 ohms Required Warm-up None

### Test Results

Starting Conditions:

Shock starting at rated supply voltage OK

Starting from a slowly increasing supply, Oscillator starts at +9 volts D. C.

Wave Form Measurements:

Square Wave

Sine Wave

Duty Cycle \_\_\_\_\_ Total Harmonic Distortion \_\_\_\_\_ or

Rise Time (10% to 90%) \_\_\_\_\_ 2nd Harmonic -36dB, 3rd Harmonic -40dB

Fall Time (10% to 90%) \_\_\_\_\_ 4th Harmonic -24dB Measured from carrier.

External Adjustments:

Frequency Max. +73 Hz Min. -60 Hz

Amplitude Max. \_\_\_\_\_ Min. \_\_\_\_\_

Frequency Stability Measurements:

Osc. Voltage	Osc. Current	Frequency or Period	Output Voltage
<u>±28V</u>	<u>50 ma</u>	<u>900,000 KHz</u>	<u>5.0 VRMS</u>

Oven Information:

Approx. Oven Turn On Current \_\_\_\_\_

Approx. Oven Idling Current at Room Temp. \_\_\_\_\_

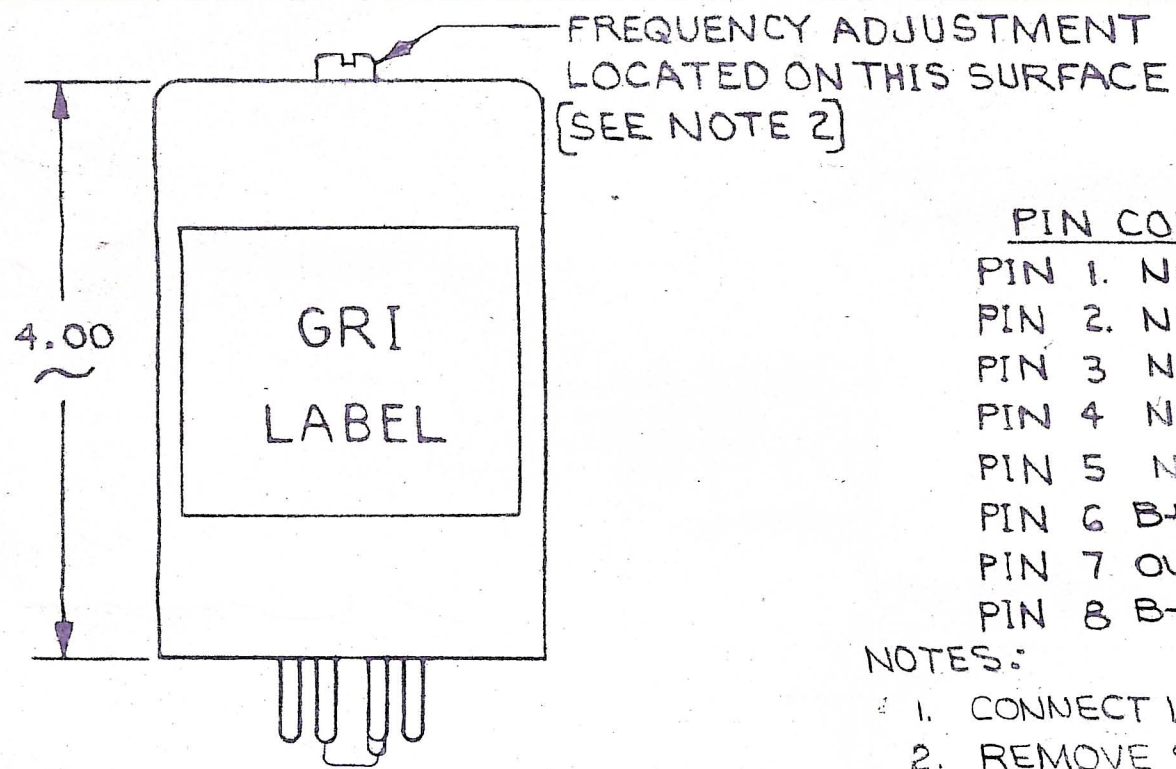
Tabulated Data:


Additional Tests long term stability

Test Performed By \_\_\_\_\_ Q. C. Approval \_\_\_\_\_

GRI  
1  
ACC

DATE	SYM	REVISION RECORD	AUTH.	DR.	CK.
8-11-77	A	REVISED NOTE 1		A	JM

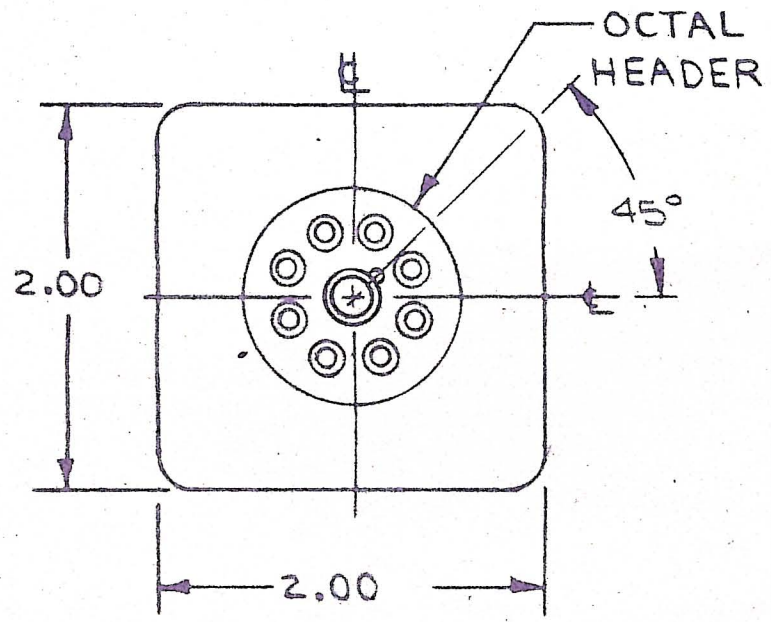


PIN CONNECTIONS

- PIN 1. NC
- PIN 2. NC
- PIN 3. NC
- PIN 4. NC
- PIN 5. NC
- PIN 6. B+ 28VDC
- PIN 7. OUTPUT
- PIN 8. B- 0 VOLTS  $\neq$  CASE GND.

NOTES:

1. CONNECT LOAD BETWEEN PINS 7 AND 8
2. REMOVE SEAL SCREW AND ADJUST FREQUENCY THRU HOLE IN TOP OF CASE WITH INSULATED TUNING TOOL JFD PART NO. 5284.



TOLERANCES (EXCEPT AS NOTED)		GREENRAY INDUSTRIES, INC. MECHANICSBURG, PENNA.			
DECIMAL	± .04	SCALE	1/1	DRAWN BY <i>Widney</i>	
FRACTIONAL	±	TITLE		APPROVED BY <i>J. Astwood</i>	
		MODEL- Y-1347			
		OUTLINE - CRYSTAL OSC.			
ANGULAR	± 1/2°	DATE	5/27/77	DRAWING NUMBER	Y134701
					REV A