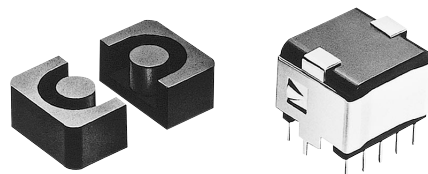
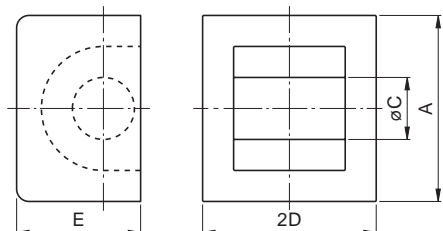


# Ferrite Cores

# EP Series

For Power Supply and Signal Transformer  
EP Cores

## CORE SHAPES AND DIMENSIONS/CHARACTERISTICS



Type	Dimensions (mm)				Ae (mm <sup>2</sup> )	le (mm)	Weight (g)
	A	øC	2D	E			
EP7	9.2±0.2	3.3±0.1	7.4±0.1	6.35±0.15	10.3	15.7	1.4
EP10	11.5±0.3	3.3±0.15	10.2±0.2	7.65±0.2	11.3	19.2	2.8
EP13	12.5±0.3	4.35±0.15	12.85±0.15	8.8±0.2	19.5	24.2	5.1
EP17	18±0.4	5.68±0.18	16.8±0.2	11±0.25	33.9	28.5	12
EP20	24±0.5	8.75±0.25	21.4±0.2	14.95±0.35	78	39.8	28

## ELECTRICAL CHARACTERISTICS WITHOUT AIR GAP

Part No.	AL-value (nH/N <sup>2</sup> )
H5AEP7-Z	1100min.[1kHz, 0.5mA, 100Ts]
PC40EP7-Z	830min.[1kHz, 0.5mA, 100Ts]
H5C3EP7-Z	4200min.[10kHz, 10mV, 100Ts]
H5AEP10-Z	1080min.[1kHz, 0.5mA, 100Ts]
H5C3EP10-Z	3850min.[10kHz, 10mV, 100Ts]
PC40EP10-Z	800min.[1kHz, 0.5mA, 100Ts]
PC50EP10-Z	800±25%[1kHz, 0.5mA, 100Ts]
H5AEP13-Z	1700min.[1kHz, 0.5mA, 100Ts]
H5C3EP13-Z	5600min.[10kHz, 10mV, 100Ts]
PC40EP13-Z	1170min.[1kHz, 0.5mA, 100Ts]
PC50EP13-Z	1100±25%[1kHz, 0.5mA, 100Ts]
H5AEP17-Z	2500min.[1kHz, 0.5mA, 100Ts]
H5C2EP17-Z	8000min.[1kHz, 0.5mA, 100Ts]
PC40EP17-Z	1840min.[1kHz, 0.5mA, 100Ts]
H5AEP20-Z	4200min.[1kHz, 0.5mA, 100Ts]
H5C2EP20-Z	13500min.[1kHz, 0.5mA, 100Ts]
PC40EP20-Z	3200min.[1kHz, 0.5mA, 100Ts]

## WITH AIR GAP

Part No.	AL-value (nH/N <sup>2</sup> )[1kHz, 0.5mA, 100Ts]
PC40EP7AXXX*	63±5%, 100±7%
PC40EP10AXXX	63±5%, 100±7%
PC50EP10AXXX	63±5%, 100±7%
PC40EP13AXXX	100±5%, 160±7%
PC50EP13AXXX	100±5%, 160±7%
PC40EP17AXXX	100±5%, 250±7%
PC40EP20AXXX	100±5%, 250±7%

\* XXX: AL-value

## BOBBINS

Part No.	No. of pin terminal	Dimensions (mm)			Clamp
		W	D	H	
BEP-7-316D	6	9.4	7.5	9.6	FEP-7-C
BEP-10-318D	8	11.8	11.2	11.8	FEP-10-C
BEP-13-3110D	10	13.4	13.7	12.7	FEP-13-C
BEP-17-318D	8	19.25	19.25	15.7	FEP-17-C
BEP-20-8110D	10	25	21.8	19.6	FEP-20-C

• Material: FR phenol, UL Grade: 94V-0, Pin material: Phosphor bronze (Solder plated)

