

MALLORY

MALLORY L PAD ATTENUATORS

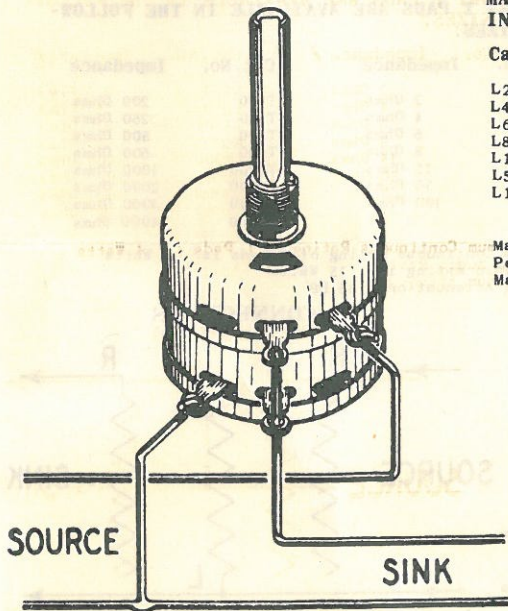
MALLORY

Mallory L pads provide a convenient and simple method of controlling the level of a low impedance audio circuit. The design is such that a constant impedance is presented to the source, the impedance of the output varying with the setting of the control. "L" pads are generally used with magnetic speakers and other devices, which are comparatively non-critical as to impedance.

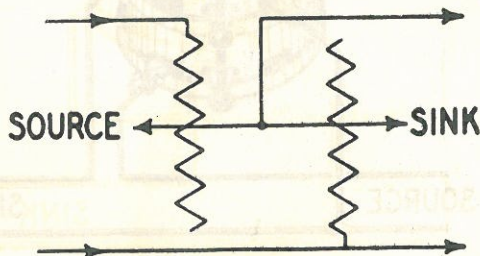
MALLORY L PADS ARE AVAILABLE IN THE FOLLOWING SIZES:

Cat. No.	Impedance	Cat. No.	Impedance
L2	2 Ohms	L200	200 Ohms
L4	4 Ohms	L250	250 Ohms
L6	6 Ohms	L500	500 Ohms
L8	8 Ohms	L600	600 Ohms
L15	15 Ohms	L1000	1000 Ohms
L50	50 Ohms	L2000	2000 Ohms
L100	100 Ohms	L3000	3000 Ohms
		L4000	4000 Ohms

Maximum Continuous Rating of L Pads is: 4 Watts
 Peak Audio Rating is: 15 Watts
 Maximum Attenuation: 36 DB



CONNECTIONS



FOR INFORMATION ON MALLORY "T" PAD ATTENUATORS—SEE OTHER SIDE

P. R. MALLORY & CO., INC., INDIANAPOLIS, INDIANA

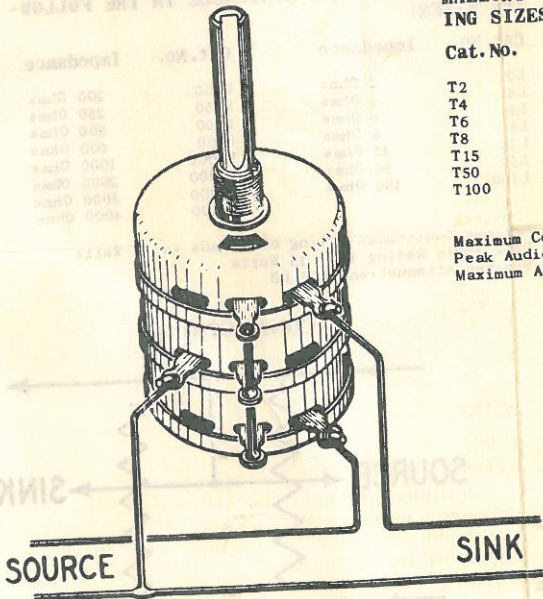
MALLORY T PAD ATTENUATORS

Mallory T pads provide a convenient method of controlling the level of low impedance audio circuits, and are useful for the volume control of microphones, electrical phonographs, talking picture amplifiers and other sound amplifying and distribution systems. The design is such as to maintain a substantially constant input and output impedance, regardless of the setting of the control.

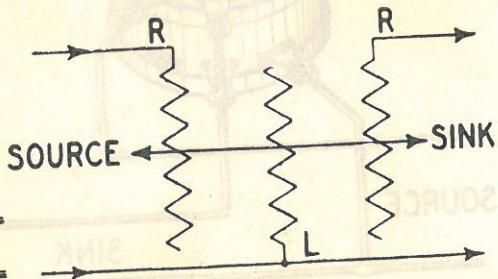
MALLORY T PADS ARE AVAILABLE IN THE FOLLOWING SIZES:

Cat. No.	Impedance	Cat. No.	Impedance
T2	2 Ohms	T200	200 Ohms
T4	4 Ohms	T250	250 Ohms
T6	6 Ohms	T500	500 Ohms
T8	8 Ohms	T600	600 Ohms
T15	15 Ohms	T1000	1000 Ohms
T50	50 Ohms	T2000	2000 Ohms
T100	100 Ohms	T3000	3000 Ohms
		T4000	4000 Ohms

Maximum Continuous Rating of T Pads is: 4 Watts
 Peak Audio Rating is: 15 Watts
 Maximum Attenuation: 36 DB



CONNECTIONS



FOR INFORMATION ON MALLORY "L" PAD ATTENUATORS—SEE OTHER SIDE
P. R. MALLORY & CO., INC., INDIANAPOLIS, INDIANA